



X-101



48V

Nominal Voltage

5.5kWh

Capacity

116Ah

Rated Capacity

FEATURES

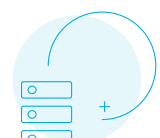
- + Optional remote monitoring with the Hubble Cloudlink
- + 1C high performance lithium battery
- + Advanced BMS with current limiting function
- + Easy wall mount or shelf rack installation
- + Heavy duty side handles for easy handling and mounting on the wall
- + High cycle and service life
- + Compatible with most inverters and chargers
- + Built in protection for over-charge, over-discharge and over-temperature
- + CAN Bus, fully integrates and communicates with leading Inverter brands



OPTIONAL MONITORING



SAFE + RELIABLE



SCALABLE

TECHNICAL DATA

Item	Specifications
Model	Hubble X-101
*Rated Capacity (5HR)	116 Ah
Nominal Voltage	48 V
Design Capacity	5.5 kWh
Equalized Charge Voltage	53.8 V
Max. Continuous Charging Current	105 A
Max. Continuous Discharging Current	105 A
C Rating	1.0 C
Depth of Discharge	100%
Weight	Approx. 42 Kg
Monitoring	Optional Cloudlink
Parallel	Parallel connection up to 15 packs with full communications
Dimensions (WxDxH) mm	442mm x 495mm x 177.5mm
Ports	1x CAN-bus, 2x Battery Link Ports
Cells	New Li-ion Prismatic Cells
Design Life	+/- 15 Years
Cycle Life @ 1C	+/- 6000 Cycles @ 50% DOD, Above 3000 cycles @ 100% DOD
Certification	CE, UN38.3, GBT31484-2015, GBT31485-2015, GBT31486-2015
Outer Package Material	White bake lacquer steel case
Operating Temperature	Charging: 0 to +55°C Discharging: -20 to +55°C Storage: -20 to +55°C
Protection	Electronic Circuit Breaker, BMS Voltage Protection, Current Limiting



Optional Remote
Monitoring with the
Hubble Cloudlink



* Due to continuous product improvements specifications are subject to change without prior notice.

** To prolong battery life the recommended charge current is 30A.

*** Ah design capacity nominally is between 110Ah and 120Ah.